

# AMPGARD 720 Ampere Reduced Voltage Solid State Starter

Offered as an alternative to traditional reactor or autotransformer type reduced voltage starters, the AMPGARD RVSS allows the user to fine tune starting parameters to meet a wide variety of unique load conditions.

Eaton has expanded the AMPGARD line of Medium Voltage Reduced Voltage Solid State Starters to include a 720 ampere version. With voltage ratings to 4160 volts, the AMPGARD 720 ampere RVSS can be applied to induction motors as large as 5000 horsepower.

Like our 400 ampere RVSS, the 720 ampere RVSS fits seamlessly into AMPGARD starter lineups. Lineups can include main breakers, switches, full and reduced voltage starters, and adjustable frequency drives. Placing the 720 ampere RVSS in a lineup allows integration of all your medium voltage control needs in one size-effective assembly.



AMPGARD 720 Ampere RVSS for 2300, 3300, and 4160 volt motors, up to 5000 horsepower



*Powering Business Worldwide*

**Specifications:**

Voltage            2300 - 4160  
                         50/60 Hz

Full Load Amperes 720 max

**Maximum Horsepower**

Induction            5000  
Synchronous        6000 at 1.0PF

Overload Rating    500% - 60 seconds  
                         600% - 30 seconds

**Peak Inverse Voltage**

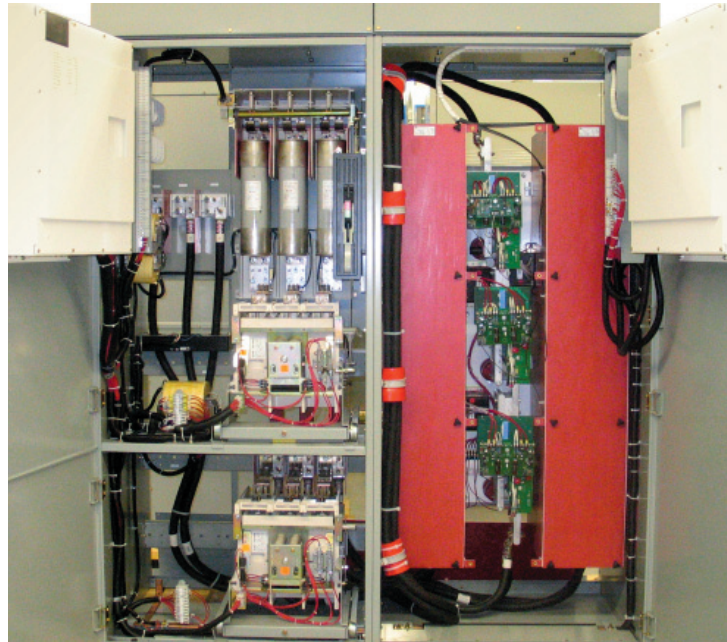
Line Voltage        PIV  
2300                   6500  
3300                   13000  
4160                   13000

BIL (kV)             60

Vacuum Bypass Contractor: Standard

**Typical Applications:**

- Pumps
- Fans
- Conveyors
- Compressors
- Chillers

**Eaton Corporation**

Electrical Sector  
1000 Cherrington Parkway  
Moon Township, PA 15108  
United States  
877-ETN-CARE (877-386-2273)  
Eaton.com/nwp

© 2009 Eaton Corporation  
All Rights Reserved  
Printed in USA  
Publication No. PA02000001E / 3PC  
June 2009