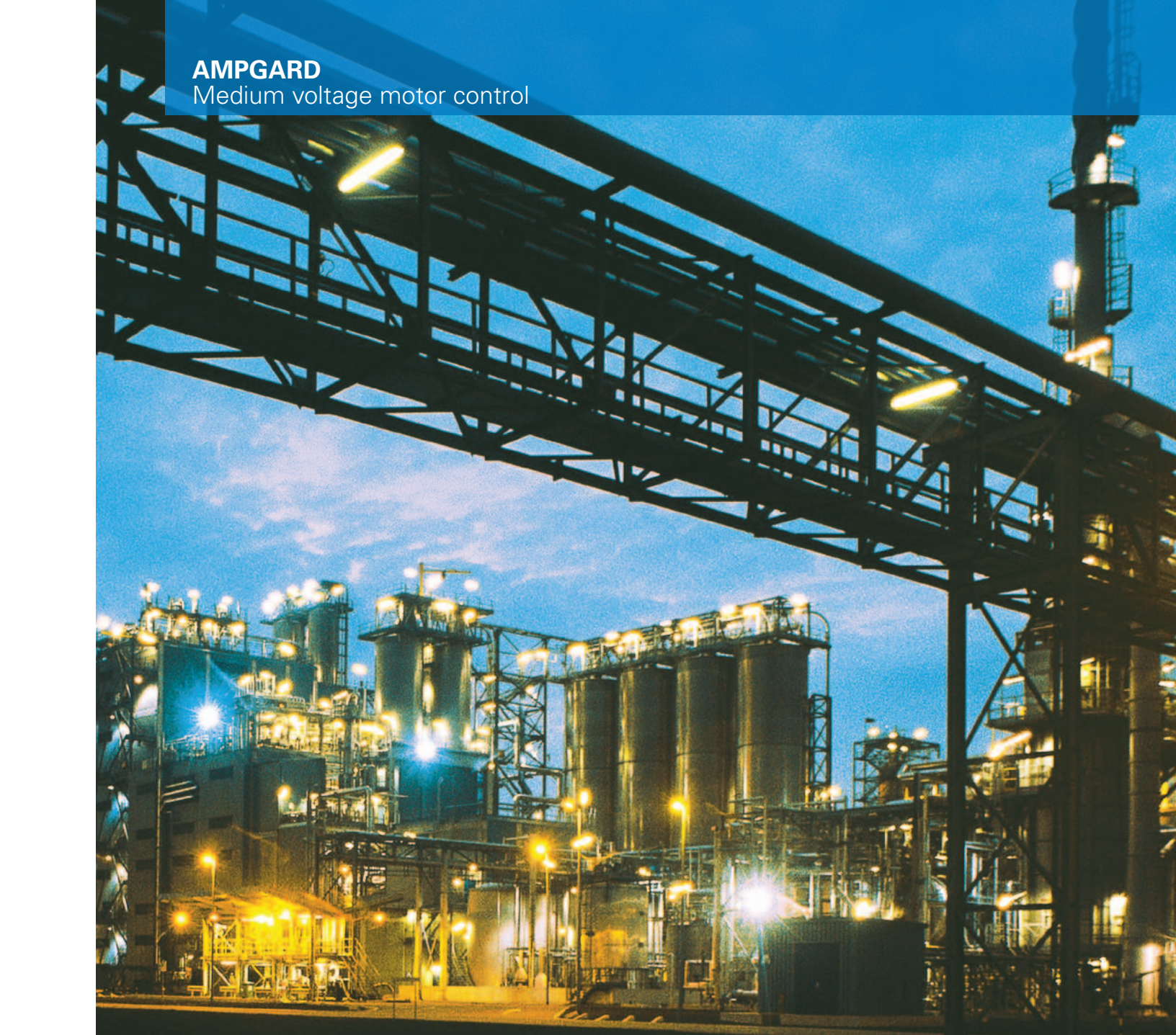


AMPGARD
Medium voltage motor control



Something good
just got even better

EATON

Powering Business Worldwide





Something good just got even better

Eaton proudly introduces the new AMPGARD® medium voltage motor control center with even more user-friendly features and capabilities you have come to expect from Eaton's medium voltage control product offering. Highly innovative, its enhanced design configuration allows for easier maintenance, accessibility and safety you can depend on.

Eaton has been the industry leader in medium voltage control for over 30 years. When it comes to protecting and controlling medium voltage motors, AMPGARD is the premier and cost-effective solution.



Starter Lineups
Can include 400A and 800A starters with top-mounted main bus.



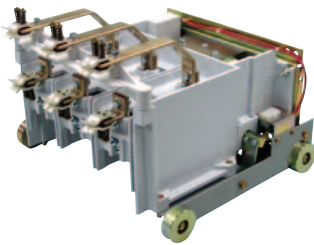
The AMPGARD advantage

New features include:

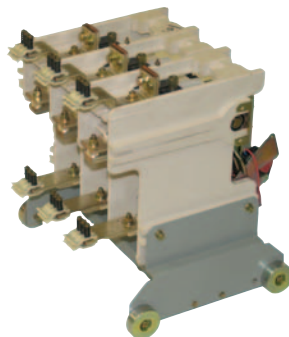
- Larger conduit area that easily accommodates two 500 kcmil cables per phase in each 400A starter
- Isolated cable entry for added safety. The starters and cables are completely isolated from each other by steel barriers
- All new low voltage wireway. Low voltage wire is isolated from the medium voltage compartment, and customer terminal blocks are accessible through the low voltage control panel
- Easily accessible low voltage panel completely isolated from the medium voltage compartment that offers generous mounting space
- Standard viewing window for visual verification of isolation switch operation
- The instrument door size increased 25%, offering a bigger mounting area to accommodate large relays
- Increased isolation switch life—5000 operations
- Compliance with both NEMA®/ANSI and IEC standards for medium voltage motor control

More features and dependability

The AMPGARD's lighter weight contactor makes it easier to handle and maintain. The AMPGARD SL Contactor offers the highest short-circuit ratings available in the industry at 8500A for the 400A and 13,200A for the 800A. The AMPGARD starter controls 200–8000 hp motors and offers full coordination between the fuse and the contactor, providing seamless protection. The new enhanced AMPGARD offers advanced protection for the motor and ease of installation. The SL solid-state control board allows field setting of contactor dropout settings for improved contactor/fuse coordination.



Stab-in 400A Contactor
Eaton has "lightened the load" for the 400A model to 60 lbs.



Stab-in 800A Contactor
Eaton has "lightened the load" of the 800A model to 90 lbs.

Additional features include:

- Main bus compartment is top mounted. Separate 12.00-inch (304.8 mm) high enclosure/compartment top, side and front accessible
- 1000A, 1200A, 2000A and 3000A main bus ratings
- Bus is copper with tin or silver plating
- 400A and 800A contactors
- Bolt-in and stab-in contactor/ starter designs
- Bolted or clip-in main fuses

Starter types include:

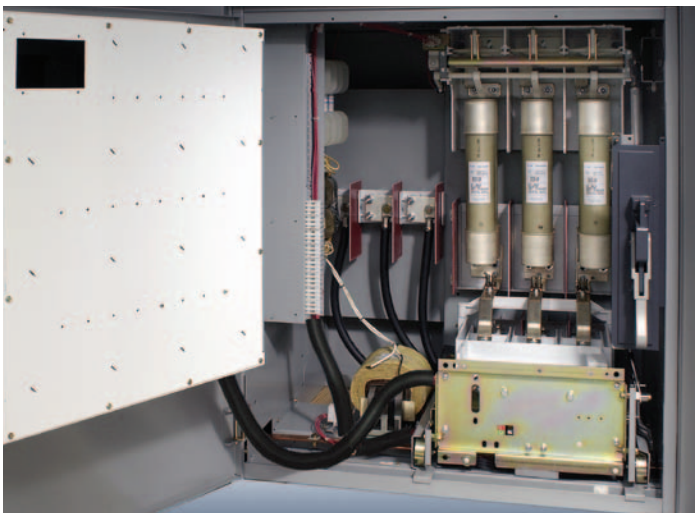
- AMPGARD *IT*. Soft Start—reduced voltage solid-state
- Reduced voltage auto-transformer and reactor
- Non-reversing and reversing
- Single- and two-speed
- Synchronous
- Wound rotor

Standard structures are 36.00 W x 92.00 H x 30.00 D (914.4 W x 2336.8 H x 762.0 D mm) including a 12.00-inch (304.8 mm) top-mounted main bus compartment.

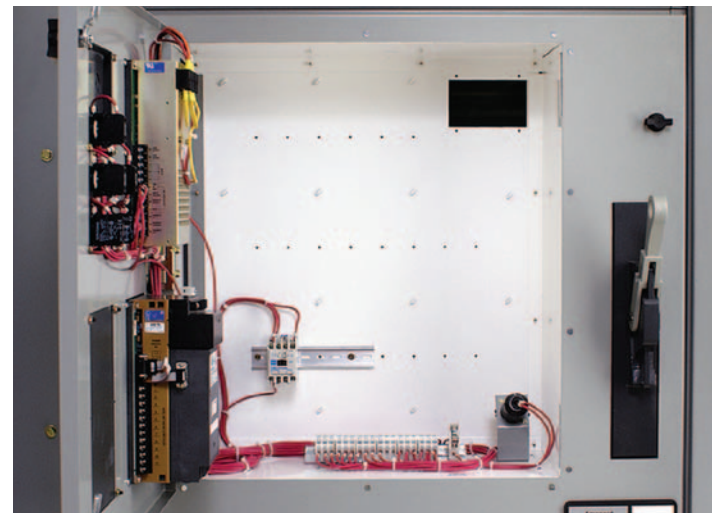
Motor control center options include:

- Incoming line/metering/auxiliary sections
- Main breaker AMPGARD, fully integrated with starter assembly design (no transition)
- Main and feeder fused and non-fused switches (600 and 1200A)
- Front aligned, rear aligned, back-to-back designs
- One- and two-high starter arrangements

Eaton is committed to manufacturing quality state-of-the-art electrical control and power distribution equipment. With AMPGARD medium voltage control, you have the utmost in high performance and reliability.



Maintenance-Friendly Starter
Allows for quick access to components.



Easily Accessible Low Voltage Compartment
Offers generous mounting space.



AMPGARD meets ANSI, NEMA and IEC standards, is seismically tested for Zone 4, is ABS approved, and is UL[®], CSA[®], cUL[®] and KEMA third-party certified. Whatever your application needs, AMPGARD is designed and manufactured to step up to the challenge.

Don't risk the damage—reduce the demand on your systems and motors with AMPGARD and protect the life of your equipment. For more information on the benefits of AMPGARD, call 1-800-525-2000 or visit us on the web at www.eaton.com/electrical.

Here are just some applications that can benefit from using AMPGARD technology:

- Petrochemical
- Waste/water treatment facilities
- HVAC
- Pulp and paper

AMPGARD makes installation, maintenance and lineup extensions easy. AMPGARD offers a full line of key features allowing improved maintainability and reliability for optimal safety. Unique assembly design and construction provides easy and safe access to the mechanism, controls, and programmable and displayed information. Low maintenance... high quality... only from Eaton. So what's so special about this AMPGARD? Eaton enhanced the AMPGARD with multiple user-friendly features resulting in quick and easy access, as well as added protection against possible contact with live parts.

With 50-plus years of experience in designing and manufacturing electrical control, power distribution and industrial automation products, Eaton has proved itself to be an industry leader in medium voltage control. Eaton's extensive product offerings, design consistency and commitment to aftermarket and project management support provide utmost quality and follow-up service unmatched in the industry. AMPGARD's innovative, engineered solutions include such benefits as unique compact designs and construction, smaller footprints, easier handling and faster lead-times.



Eaton's Electrical Sector is a global leader in power distribution, power quality, control and automation, and monitoring products. When combined with Eaton's full-scale engineering services, these products provide customer-driven PowerChain™ solutions to serve the power system needs of the data center, industrial, institutional, public sector, utility, commercial, residential, IT, mission critical, alternative energy and OEM markets worldwide.

PowerChain solutions help enterprises achieve sustainable and competitive advantages through proactive management of the power system as a strategic, integrated asset throughout its life cycle, resulting in enhanced safety, greater reliability and energy efficiency. For more information, visit www.eaton.com/electrical.

Eaton Corporation
Electrical Sector
1111 Superior Ave.
Cleveland, OH 44114
United States
877-ETN-CARE (877-386-2273)
Eaton.com

© 2010 Eaton Corporation
All Rights Reserved
Printed in USA
Publication No. BR02003002E / Z10381
October 2010



**PowerChain
Management®**

PowerChain Management is a registered trademark of Eaton Corporation.

All other trademarks are property of their respective owners.