

Medium Voltage Motor Control

Ampgard XP3

Eaton's Ampgard XP3 marks the next evolution in intelligent medium voltage motor control. Ampgard XP3 integrates the familiar Ampgard medium voltage starter with new protection, diagnostic, and control components to deliver a medium voltage starter of unmatched performance. The Ampgard XP3 takes communication to the next level as well with multiple communications options available, including Ethernet, Modbus, and Profibus and integrated email notification of important events.

Starter Display Module (SDM)



Central Display Module (CDM)



Ampgard XP3 utilizes contactor mounted current and voltage sensors along with a protection and control board as the heart of the system. The sensors employ Rogowski coils for current input and a divider network for voltage input. These technologies allow the sensor to work over a wide range of currents and voltages, resulting in a single style contactor for 400A starters and a single style contactor for 720A starters.

Unique protection and diagnostic features include:

- Contactor-fuse coordination with minimum contactor clearing time
- Contactor health algorithm to ensure proper operation of the power circuit vacuum contactors
- Thermal age of motor display that indicates how hard the motor has been run
- Fault current available at the starter along with Personal Protective Equipment (PPE) requirements
- Sensitive ground fault detection at current levels down to 4 amperes in standard configuration. Optional sensing to 0.25 amperes also available.
- A low voltage door mounted "Starter Display Module" (SDM) provides important starter operating and protection information at each starter

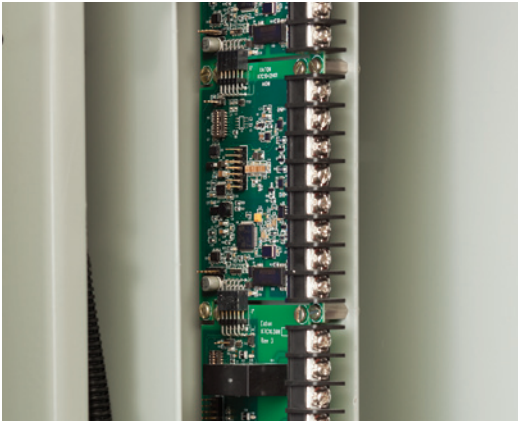
With the Ampgard XP3, there's no longer a reason for operators to stand in front of a starter for routine operation or monitoring. A Central Display Module (CDM) with touch screen capabilities communicates with every starter in the lineup, eliminating the need to go to the front of each starter to operate the starter or determine starter status. The CDM also displays the status of all starters, equipment drawings, instruction books, and renewal parts, as well as tutorials on how to perform routine maintenance.

Digital and Analog I/O boards provide control circuit flexibility with minimal wiring changes. Each Digital I/O board has four inputs and three outputs. Analog boards have two inputs and two outputs. Up to six boards per starter can be supplied. All I/O boards accept ring terminals with up to 10 gauge wire.

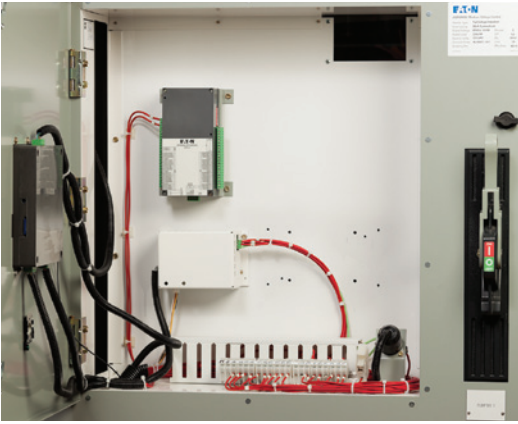
EATON

Powering Business Worldwide

Ampgard XP3 Low Voltage Control with Digital and Analog IO



Ampgard XP3 Low Voltage Control Compartment



Ampgard XP3 Medium Voltage Starter with MV Door Open



Ampgard XP3 Main Contactor with Sensor Module (SM) and Motor Protection and Control Card (MPCC)



Eaton Corporation
Electrical Sector
1111 Superior Ave.
Cleveland, OH 44114
United States
877-ETN-CARE (877-386-2273)
Eaton.com

© 2011 Eaton Corporation
All Rights Reserved
Printed in USA
Publication No. PA02003005E / 3PC
December 2011

